

**Cherwell**  
DISTRICT COUNCIL  
NORTH OXFORDSHIRE

Bodicote House  
Bodicote  
Banbury  
Oxfordshire  
OX15 4AA

[www.cherwell.gov.uk](http://www.cherwell.gov.uk)

---

|                 |  |              |   |
|-----------------|--|--------------|---|
| Please ask for: | Democratic and Elections Team  | Direct Dial: | 01295 221534                            |
| Email:          | <a href="mailto:democracy@cherwell-dc.gov.uk">democracy@cherwell-dc.gov.uk</a> | Our Ref:     | CGR – Banbury and surrounding areas BAN |

---

22 November 2021

**Please give us your views – Cherwell District Council are reviewing the Banbury parish boundary**

We (Cherwell District Council) have been asked by Banbury Town Council to review the parish boundary between Banbury and all neighbouring parishes. This is called a Community Governance Review.

Banbury Town Council have requested that we review its external boundary due to the amount of development that has recently taken place.

Officers from our Street Naming and Numbering team have also brought to our attention a recent planning application approval for a site that crosses the boundary from Banbury into Bodicote and Adderbury parishes, and some properties in Longford Park which should have been moved into Banbury with the rest of the Longford Park development when a boundary review was undertaken in 2016.

**Recent Planning approval – Area E**

We have recently granted outline planning permission for application reference 19/01047/OUT, the area marked E on the map on page 3. This permission is for up to 850 homes.

As shown on the map, this site is predominantly in Banbury but crosses into Bodicote as it wraps round Bannatyne Health Club and Banbury Rugby Club which are in Bodicote. The proposed access road crosses the parish boundary into Adderbury.

This development will sit alongside Longford Park, which was moved from Bodicote Parish into Banbury Parish in 2016.

As outline permission has been granted, it is a good time to consider whether the parish boundary should change, so that all houses on the site are in the same parish when they are built.

## **Area F – properties on Longford Park Road**

The Street Naming and Numbering Team have made us aware of two properties on Longford Park Road which are still within Bodicote Parish. These properties should have been moved into Banbury Parish in 2016, when the rest of Longford Park moved.

## **Other boundaries**

The map also shows the current boundaries between Banbury and the surrounding parishes of:

- North Newington
- Broughton
- Bloxham

We haven't been asked to consider anything specific regarding these areas of the Banbury boundary, but if you wish to raise anything relating to these boundaries there is space on the reply slip to do so.

Changes to the boundary between Banbury and Warkworth, and Banbury and Overthorpe can't be considered as part of this review, as these boundaries are also the County boundaries with Northamptonshire.

The boundary between Banbury, Drayton and Hanwell is also being reviewed, this is covered in a separate document which can be found via our website

[www.cherwell.gov.uk/communitygovernance](http://www.cherwell.gov.uk/communitygovernance) or requested from the Democratic and Elections Team [democracy@cherwell-dc.gov.uk](mailto:democracy@cherwell-dc.gov.uk).

## **What happens now?**

A consultation is running from Monday 22 November 2021 to Monday 31 January 2022, to find out what people think of the possibility of boundary changes. It is important to point out that just because a boundary review has been requested, there is no guarantee that changes will be made. Public consultation is a very important part of a community governance review, and all views received will be taken into consideration.

Anyone who wants to can take part in the consultation. A copy of this letter is available from our website [www.cherwell.gov.uk/communitygovernance](http://www.cherwell.gov.uk/communitygovernance).

## **How do I have my say on these suggestions?**

On pages 5 and 6 you will find a reply slip. Please take a few minutes to fill this in and return it using the envelope supplied. You don't need to use a stamp as we will pay the postage.

If more than one person in your household would like to reply, that's not a problem as you're not limited to one reply per household. You can:

- photocopy the reply slip
- download extra copies from our website [www.cherwell.gov.uk/communitygovernance](http://www.cherwell.gov.uk/communitygovernance)
- send us an email [democracy@cherwell-dc.gov.uk](mailto:democracy@cherwell-dc.gov.uk)
- reply online via the Let's Talk Cherwell pages. You will need to create an account if you want to use Let's Talk, this will only take a few minutes.

All written or emailed responses should reach us by Monday 31 January 2022 to be taken into consideration. The online survey will close at 11:59pm on the same date.

All responses will be considered by a group of Cherwell District Councillors, who will make recommendations about what should happen next. Those recommendations will be discussed by all District Councillors at a Full Council meeting in May 2022. A second consultation on the agreed recommendations will start in July 2022.

If you have any questions about this letter, or the review in general, please contact us by email: [democracy@cherwell-dc.gov.uk](mailto:democracy@cherwell-dc.gov.uk) or telephone: 01295 221534

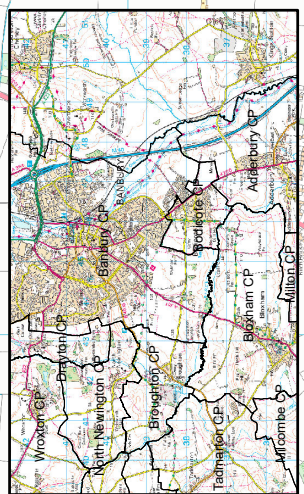
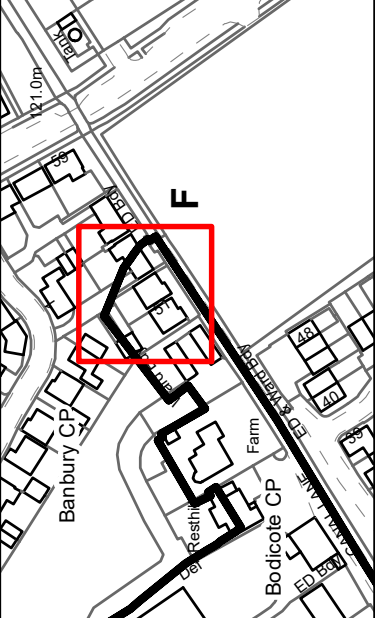
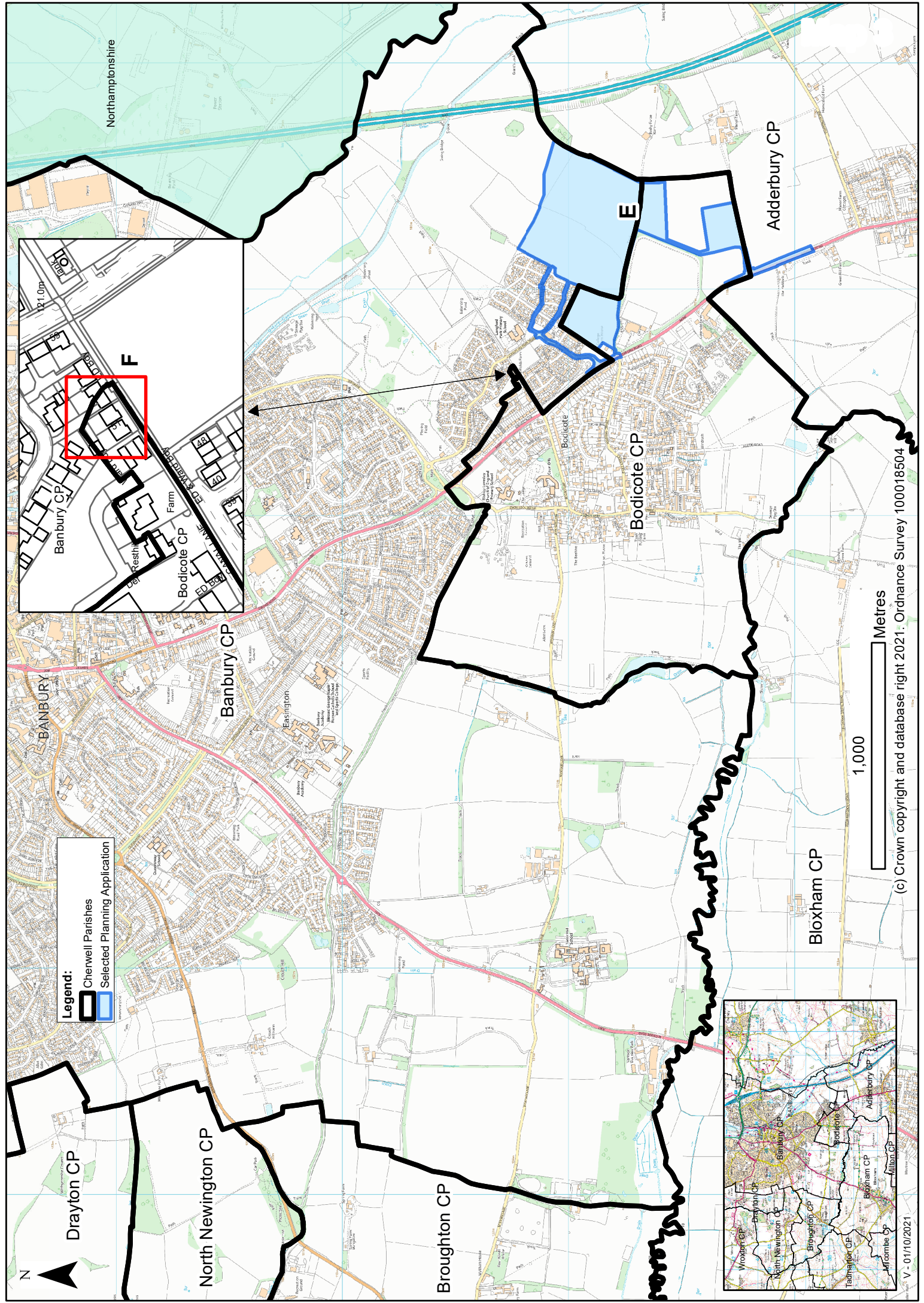
Yours sincerely,

Democratic and Elections Team  
Cherwell District Council

If you require this document in a different format (such as a large print version or special access facilities) please contact the Democratic and Elections Team, [democracy@cherwell-dc.gov.uk](mailto:democracy@cherwell-dc.gov.uk)

All information collected through this consultation will be treated appropriately to conform with data protection legislation. The Council has to publish all comments received in connection with a community governance review. If we receive a comment on behalf of a group, such as a parish council, political party or disability access group, we will name the group, but we will not publish the names of individuals who have commented.





(c) Crown copyright and database right 2021. Ordnance Survey 100018504

V - 01/10/2021

## BAN Banbury and surrounding areas Community Governance Review

### Tell us what you think

Name:

Address:

We will not share your name and address with anyone, we have only asked for these details so that we can see which areas have replied. If you would prefer, you can just tell us the street or village you live in.

#### Question 1.

Do you think the parish boundary between Banbury and Bodicote should be moved, so that the site of the outline planning permission 19/01047/OUT, area E on the map, is all in one parish?

Yes ☐

No ☐

I have no view on this ☐

Please give reasons for your answer

---

---

---

---

---

---

---

---

#### Question 2.

If you answered yes to question 1, should area E be in Banbury or Bodicote?

Banbury ☐

Bodicote ☐

Please give reasons for your answer

---

---

---

---

---

---

---

---

**Question 3.**

Do you think it is a good idea to move the properties on Longford Park Road, area F on the map, into Banbury?

Yes ☐

No ☐

I have no view on this ☐

Please give brief reasons for your answer

---

---

---

---

---

---

**Question 4.**

Do you think there should be any further changes to the Banbury parish boundary?

Yes ☐

No ☐

If you said yes, please specify which boundary and give details. Feel free to use the map to show suggested changes

---

---

---

---

---

---

**Question 5.**

Do you have any further comments to make? (feel free to use additional pages for more space).

---

---

---

---

---

---

---

---